

β -Tubulin(10G10)单克隆抗体

货号: DE0622-100 μ l

规格: 100 μ l

背景: 微管蛋白是微管的主要构件。这种细胞内的，圆柱体的，纤维结构几乎存在于所有的真核细胞中。微管蛋白是由 α -tubulin 和 β -tubulin 构成的一种异质二聚体。我们的 β -tubulin 单克隆抗体为研究细胞骨架的细胞内分布及细胞骨架的静态和动态方面提供了一种特殊而又有用的工具。

产品名称: β -Tubulin(10G10)单克隆抗体，来源于小鼠。

来源: β -Tubulin 抗体是将合成的肽段 ESNMNDLVSEYQQYQDATAAC 偶联到 KLH 上之后，免疫小鼠产生的抗体。

浓度组分: 0.5mg/ml，溶解在 pH7.4 的 PBS 溶液中，包含 0.02%的叠氮钠和 50%甘油

应用: WB;Dot;ELISA

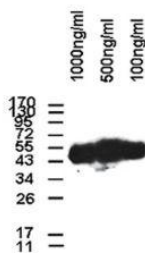
推荐稀释浓度: 1:500-1:5000

同种型: 小鼠 IgG1

外观/储存/特异性: 液体/-20 $^{\circ}$ C/所有物种

检测图

Anti- β -tubulin Monoclonal Antibody



Western blot 分析不同浓度的 β -tubulin 抗体

WESTERN BLOTS

封闭:

用 5%脱脂奶粉 (1XPBS) 溶液孵育膜, 4 $^{\circ}$ C, 过夜

抗体孵育:

用 5%脱脂奶粉 (1XTBS,0.1% 吐温 20) 溶液稀释抗体, 室温,30mins

Anti- β -Tubulin(10G10)Monoclonal Antibody

Code Number: DE0622-100 μ l

Size: 100 μ l

BACKGROUND: Tubulin is the major building block of microtubules. This intracellular, cylindrical, filamentous structure is present in almost all eukaryotic cells. Tubulin is a heterodimer that consists of α -tubulin and β -tubulin. Our anti- β -tubulin monoclonal antibody provides a specific and useful tool in studying the intracellular distribution of tubulin and the static and dynamic aspects of the cytoskeleton.

PRODUCT NAME: Anti- β -Tubulin(10G10) Monoclonal Antibody

Produced in Mouse

SOURCE: Monoclonal antibody is produced by immunizing mouse with synthetic peptide ESNMNDLVSEYQQYQDATAAC, coupled to KLH.

CONCENTRATION: 0.5mg/ml in PBS, pH7.4, containing 0.02% Sodium Azide and 50% glycerol

APPLICATIONS: WB;Dot;ELISA

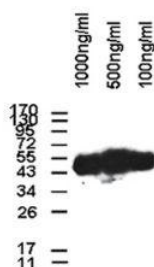
RECOMMENDED DILUTION: 1:500-1:5000

ISOTYPE: Mouse IgG1

FORM/STORAGE/SPECIFICITY: Liquid/-20 $^{\circ}$ C/All species

TESTING IMAGE

Anti- β -tubulin Monoclonal Antibody



Western blot analysis of different concentration of β -Tubulin(10G10)Monoclonal Antibody

FOR WESTERN BLOTS

Blocking:

Incubate the membrane with 5% Non-Fat Milk 1xPBS, 4 $^{\circ}$ C, overnight

Antibody Incubation:

Diluted antibody in 5% Non-Fat Milk

1XTBS, 0.1% Tween-20, RT, 30mins