

## GAPDH(5A12)单克隆抗体

**货号:** DE0621-100 $\mu$ l

**规格:** 100 $\mu$ l

**背景:** 甘油醛-3-磷酸脱氢酶是一种同型四聚体链，在无机磷酸盐和烟酰胺腺嘌呤二核苷酸存在时，可催化甘油醛-3-磷酸可逆的氧化磷酸化。在碳水化合物代谢过程中这是一个重要的能量输出步骤。GAPDH 被发现在几乎所有的物种中有着较低的进化速率。

**产品名称:** GAPDH(5A12)单克隆抗体，来源于小鼠。

**来源:** GAPDH 标签抗体是由合成的多肽[CRLEKPAKYDDIKK]免疫动物而产生。

**浓度组分:** 0.5mg/ml 溶解在 pH7.4 的 PBS 溶液中，包含 0.02%的叠氮钠和 50%甘油

**应用:** WB;Dot;ELISA

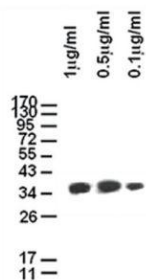
**推荐稀释浓度:** 1:500-1:5000

**同种型:** 小鼠 IgG1

**外观/储存/特异性:** 液体/-20 $^{\circ}$ C/所有物种

### 检测图

Anti-GAPDH Monoclonal Antibody



Ag: 293-T cell lysate

Western blot 分析不同浓度的 GAPDH 抗体

### WESTERN BLOTS

封闭:

用 5%脱脂奶粉 (1XPBS) 溶液孵育膜, 4 $^{\circ}$ C, 过夜

抗体孵育:

用 5%脱脂奶粉 (1XTBS,0.1% 吐温 20) 溶液稀释抗体, 室温,30mins

## Anti-GAPDH(5A12)Monoclonal Antibody

**Code Number:** DE0621-100 $\mu$ l

**Size:** 100 $\mu$ l

**BACKGROUND:** The enzyme glyceraldehyde-3-phosphate dehydrogenase is a tetramer of identical chains that catalyzes the reversible oxidative phosphorylation of glyceraldehyde-3-phosphate in the presence of inorganic phosphate and nicotinamide adenine dinucleotide. This is an important energy-yielding step in carbohydrate metabolism. GAPDH is found in almost all species with low rate of evolutionary changes.

**PRODUCT NAME:** Anti-GAPDH(5A12) Monoclonal Antibody

Produced in Mouse

**SOURCE:** This antibody is produced by immunizing animals with a synthetic peptide[CRLEKPAKYDDIKK] corresponding to KLH.

**CONCENTRATION:** 0.5mg/ml in PBS, pH7.4,containing 0.02% Sodium Azide and 50% glycerol

**APPLICATIONS:** WB;Dot;ELISA

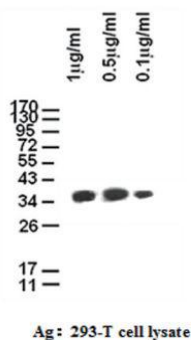
**RECOMMENDED DILUTION:** 1:500-1:5000

**ISOTYPE:** Mouse IgG1

**FORM/STORAGE/SPECIFICITY:**Liquid/-20 $^{\circ}$ C/All species

### TESTING IMAGE

Anti-GAPDH Monoclonal Antibody



Western blot analysis of different concentration of Anti-GAPDH(5A12) Monoclonal Antibody

### FOR WESTERN BLOTS

Blocking:

Incubate the membrane with 5% Non-Fat Milk 1xPBS ,4 $^{\circ}$ C , overnight

Antibody Incubation:

Diluted antibody in 5% Non-Fat Milk

1XTBS,0.1% Tween-20,RT,30mins