

β -Actin(2F3)单克隆抗体

货号: DE0620-100 μ l

规格: 100 μ l

背景: 肌动蛋白对细胞的存活是必不可少的，已经有实验证明肌动蛋白的表达量是受到严格控制的（表达量恒定），所以在 WB 实验中，肌动蛋白总是被用于内参定量。 β -actin 定位在细胞扩展的边缘，在细胞迁移中利用细胞骨架来保护自己免受细胞周边物质对 actin 的损伤。

产品名称: β -Actin(2F3)单克隆抗体，来源于小鼠。

来源: β -Actin 抗体是将合成的 β -Actin N 段肽偶联到 KLH 上之后，免疫动物产生的抗体。

浓度组分: 0.5mg/ml，溶解在 pH7.4 的 PBS 溶液中，包含 0.02%的叠氮钠和 50%甘油

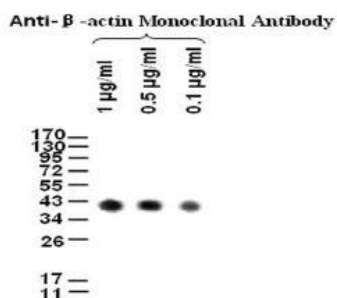
应用: WB;Dot;ELISA

推荐稀释浓度: 1:500-1:5000

同种型: 小鼠 IgG1

外观/储存/特异性: 液体/-20 $^{\circ}$ C/所有物种

检测图



Western blot 分析不同浓度的 β -Actin 抗体

WESTERN BLOTS

封闭:

用 5%脱脂奶粉（1XPBS）溶液孵育膜，4 $^{\circ}$ C，过夜

抗体孵育:

用 5%脱脂奶粉（1XTBS,0.1% 吐温 20）溶液稀释抗体，室温,30min

Anti- β -Actin(2F3)Monoclonal Antibody

Code Number: DE0620-100 μ l

Size: 100 μ l

BACKGROUND: As actin is essential for cell survival it has been postulated that the quantity of actin is under such tight control at a cellular level that it is always used to be internal control in western blot. β -Actin is located at the expanding edge of cells that use the projection of their cellular structures as their means of mobility.

PRODUCT NAME: Anti- β -Actin(2F3) Monoclonal Antibody

Produced in Mouse

SOURCE: This antibody is produced by immunizing animals with a synthetic peptide near the N-terminal of β -Actin corresponding to KLH.

CONCENTRATION: 0.5mg/ml in PBS, pH7.4,containing 0.02% Sodium Azide and 50% glycerol

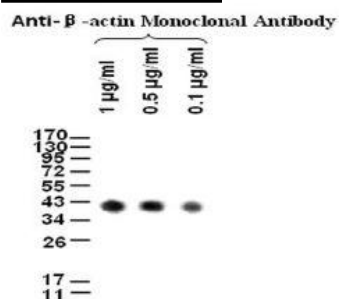
APPLICATIONS: WB;Dot;ELISA

RECOMMENDED DILUTION: 1:500-1:5000

ISOTYPE: Mouse IgG1

FORM/STORAGE/SPECIFICITY: Liquid/-20 $^{\circ}$ C/All species

TESTING IMAGE



Western blot analysis of different concentration of β -Actin(2F3)Monoclonal Antibody

FOR WESTERN BLOTS

Blocking:

Incubate the membrane with 5% Non-Fat Milk 1xPBS ,4 $^{\circ}$ C , overnight

Antibody Incubation:

Diluted antibody in 5% Non-Fat Milk

1XTBS,0.1% Tween-20,RT,30min