

## GFP Tag(8C1)单克隆抗体

**货号:** DE0610-100 $\mu$ l

**规格:** 100 $\mu$ l

**背景:** 绿色荧光蛋白是一种从维多利亚多管发光水母中提取的 27kD 的蛋白质。无论是在真核或原核细胞中表达, 当被蓝光或紫外光激发时, GFP 均产生亮绿色荧光。荧光蛋白及其等位基因突变体可以发出蓝色, 蓝绿色和黄色荧光, 变成一个无处不在的(荧光标签蛋白)工具。有许多重组蛋白标记 GFP 标签, 以便于蛋白的检测、分离和纯化。

**产品名称:** GFP (8C1)单克隆抗体, 来源于小鼠。

**来源:** GFP 标签抗体是将合成的 GFP 标签多肽偶联到 KLH 上之后, 免疫动物产生的抗体。

**浓度组分:** 0.5mg/ml 溶解在 pH7.4 的 PBS 溶液中, 包含 0.02%的叠氮钠和 50%甘油

**应用:** WB;Dot;ELISA

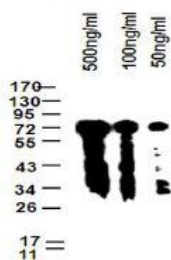
**推荐稀释浓度:** 1:500-1:5000

**同种型:** 小鼠 IgG1

**外观/储存/特异性:** 液体/-20 $^{\circ}$ C/所有物种

### 检测图

Anti-GFP Tag Monoclonal Antibody



Western blot 分析不同浓度的 GFP 标签抗体

### WESTERN BLOTS

封闭:

用 5%脱脂奶粉 (1XPBS) 溶液孵育膜, 4 $^{\circ}$ C, 过夜

抗体孵育:

用 5%脱脂奶粉 (1XTBS,0.1% 吐温 20) 溶液稀释抗体, 室温,30min

## Anti-GFP Tag(8C1) Monoclonal Antibody

**Code Number:** DE0610-100 $\mu$ l

**Size:** 100 $\mu$ l

**BACKGROUND:** Green fluorescent protein is a 27kD protein, derived from the bioluminescent jellyfish *Aequorea Victoria*. When expressed in either eukaryotic or prokaryotic cells and illuminated by blue or UV light, GFP yields a bright green fluorescence. Fluorescent proteins and its mutated allelic forms, blue, cyan and yellow have become a useful and ubiquitous tool where they function as a fluorescent protein tag. Many recombinant proteins have been engineered with GFP tags to facilitate the detection, isolation and purification of the proteins.

**PRODUCT NAME:** Anti-GFP Tag(8C1) Monoclonal Antibody  
Produced in Mouse

**SOURCE:** This antibody is produced by immunizing animals with a synthetic GFP tag peptide corresponding to KLH.

**CONCENTRATION:** 0.5mg/ml in PBS, pH7.4, containing 0.02% Sodium Azide and 50% glycerol

**APPLICATIONS:** WB;Dot;ELISA

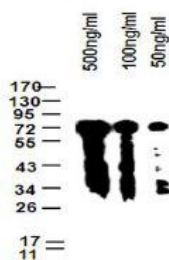
**RECOMMENDED DILUTION:** 1:500-1:5000

**ISOTYPE:** Mouse IgG1

**FORM/STORAGE/SPECIFICITY:** Liquid/-20 $^{\circ}$ C/All species

### TESTING IMAGE

Anti-GFP Tag Monoclonal Antibody



Western blot analysis of different concentration of Anti-GFP Tag(8C1) Monoclonal Antibody

### FOR WESTERN BLOTS

Blocking:

Incubate the membrane with 5% Non-Fat Milk 1xPBS, 4 $^{\circ}$ C, overnight

Antibody Incubation:

Diluted antibody in 5% Non-Fat Milk

1XTBS, 0.1% Tween-20, RT, 30min