

## Anti-Flag tag(1E6)单克隆抗体

**货号:** DE0611-100 $\mu$ l

**规格:** 100 $\mu$ l

**背景:** FLAG 标签或者 FLAG 八肽或者 FLAG 表位是一种序列为 DYKDDDDK 的多肽蛋白标签, 利用重组 DNA 技术能被标记到蛋白上。它代表了早期的纳米技术设备, 能够被像分子把手似的被连接到蛋白上, 然后控制蛋白, 随后把蛋白分离出来。FLAG 标签常被用来研究活细胞中蛋白, 利用亲和层析技术纯化蛋白。

**产品名称:** Flag(1E6)标签单克隆抗体, 来源于小鼠。

**来源:** Flag 抗体是将合成的 Flag 标签多肽偶联到 KLH 上之后, 免疫动物产生的抗体。

**浓度组分:** 0.5mg/ml 溶解在 pH7.4 的 PBS 溶液中, 包含 0.02%的叠氮钠和 50%甘油

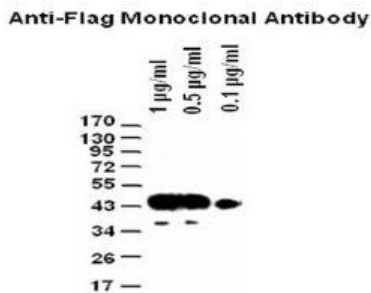
**应用:** WB;Dot;ELISA

**推荐稀释浓度:** 1:500-1:5000

**同种型:** 小鼠 IgG2b

**外观/储存/特异性:** 液体/-20 $^{\circ}$ C/所有物种

### 检测图



Western blot 分析不同浓度的 Flag 标签抗体

### WESTERN BLOTS

封闭:

用 5%脱脂奶粉 (1XPBS) 溶液孵育膜, 4 $^{\circ}$ C, 过夜

抗体孵育:

用 5%脱脂奶粉 (1XTBS,0.1% 吐温 20) 溶液稀释抗体,室温,30min

## Anti-Flag tag(1E6)Monoclonal Antibody

**Code Number:** DE0611-100 $\mu$ l

**Size:** 100 $\mu$ l

**BACKGROUND:** FLAG-Tag,or FLAG octapeptide,or FLAG epitope, is a polypeptide protein tag that can be added to a protein using recombinant DNA technology,having the sequence motif DYKDDDDK.It represents an early example of a nanotechnology device, in that it can be attached to a protein like a molecular handle, then used to manipulate the protein, and subsequently detached. It has been used for studying proteins in living cells and for protein purification by affinity chromatography.

**PRODUCT NAME:** Anti-Flag tag(1E6) Monoclonal Antibody

Produced in Mouse

**SOURCE:** This antibody is produced by immunizing animals with a synthetic Flag tag peptide corresponding to KLH.

**CONCENTRATION:** 0.5mg/ml in PBS, pH7.4,containing 0.02% Sodium Azide and 50% glycerol

**APPLICATIONS:** WB;Dot;ELISA

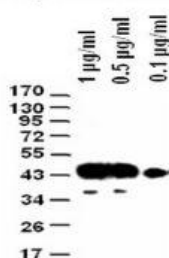
**RECOMMENDED DILUTION:** 1:500-1:5000

**ISOTYPE:** Mouse IgG2b

**FORM/STORAGE/SPECIFICITY:** Liquid/-20 $^{\circ}$ C/All species

### TESTING IMAGE

Anti-Flag Monoclonal Antibody



Western blot analysis of different concentration of Anti-Flag tag(1E6)Monoclonal Antibody

### FOR WESTERN BLOTS

Blocking:

Incubate the membrane with 5% Non-Fat Milk 1xPBS ,4 $^{\circ}$ C , overnight

Antibody Incubation:

Diluted antibody in 5% Non-Fat Milk

1XTBS,0.1% Tween-20,RT,30mis